

ORIFICE PLATE

04# Orifice Plate for RE528407 Injector Technical Data

SKU1: G1Z11000000004

SKU2: G1F22950400400

SKU3: G1L32950400400

SKU4: G1N12950400400

SKU5: G1Z172950400400

G2

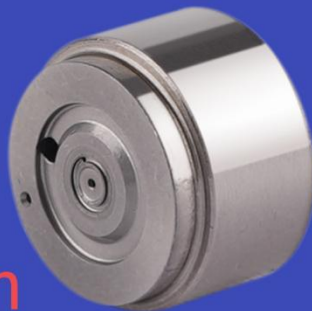
G3

G4

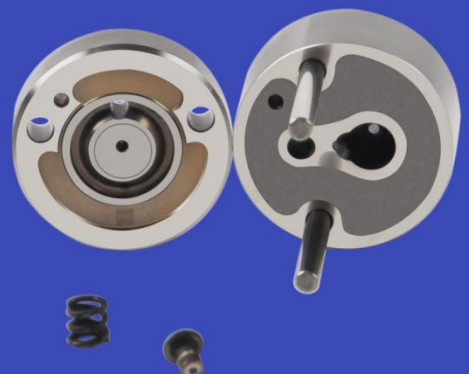
PIEZO

ORIFICE PLATE

Injector
Parts



Common
Rail
Injector
Parts



04# Orifice Plate for RE528407 Injector Technical Data

Content

1. RE528407 Injector Orifice Plate 04# Basic Information	2
2. RE528407 Injector Orifice Plate 04# Common Part Number	2
3. RE528407 Injector Orifice Plate 04# Specifications and Dimensions	2
4. RE528407 Injector Orifice Plate 04# Customized Service	2
5. RE528407 Injector Orifice Plate 04# Thickness Measurement Tool's Introduction	3
6. RE528407 Injector Orifice Plate 04# Thickness Measurement Methods	3
7. RE528407 Injector Orifice Plate 04# Quality Control	3
8. RE528407 Injector Orifice Plate 04# Warranty Instructions	3
9. RE528407 Injector Orifice Plate 04# Installation Steps	4
10. RE528407 Injector Orifice Plate 04# Purchase Payment Methods	4
11. RE528407 Injector Orifice Plate 04# Shipping Ways	5
12. RE528407 Injector Orifice Plate 04# Packing	5

1. RE528407 Injector Orifice Plate 04# Basic Information

Title	Common Rail Orifice Plate 04# for RE528407 fuel Injector	Product Quality
SKU1	G1Z11000000004	China made new
SKU2	G1F22950400400	China made new
SKU3	G1L32950400400	China made new
SKU4	G1N12950400400	China made new
SKU5	G1Z172950400400	China made new

2. RE528407 Injector Orifice Plate 04# Common Part Number**(1) RE528407 Injector Orifice Plate 04# Application to Car Model Information**

Injector Part Number	Car Model	OE Number	OE Number	OE Number	OE Number
RE528407	JOHN DEER 9.0L S450	JOHN DEER	RE546776	RE529149	SE501947

3. RE528407 Injector Orifice Plate 04# Specifications and Dimensions

Injector Orifice Plate's Size: 2cm*2 cm *1 cm

Injector Orifice Plate's Box Size: 7cm *7 cm *2 cm

Injector Orifice Plate's Package Size: 8 cm * 8cm

Injector Orifice Plate's Net Weight: 0.015kg

Injector Orifice Plate's Gross Weight: 0.03kg

Injector Orifice Plate's Quality: China Made Brand New

MOQ: 4 Pieces

4. RE528407 Injector Orifice Plate 04# Customized Service**(1) RE528407 Injector Orifice Plate 04# Customized Service Range:**

The customization amount of orifice plate 04# must meet the OEM manufacturers customized demands of orifice plate's lettering, orifice plate's thickness, orifice plate's packing box, orifice plate's anti-rust bag and label etc.,.

(2) RE528407 Injector Orifice Plate 04# Customized Service Requirements:

▲ Custom lettering of injector orifice plate are not less than 100 pieces.

▲ Custom packing boxes of injector orifice plate are not less than 100 pieces.

▲ The purchase of injector orifice plates are not less than 100 pieces.

▲ When customized products involve the need of specific logo, the OEM manufacturer has to provide trademark authorization and the sample of logo image file.

▲ Once the customized RE528407 injector orifice plate 04# is sold, it cannot be returned or exchanged if there is no quality problems.

5. RE528407 Injector Orifice Plate 04# Thickness Measurement Tool's Introduction

(1) Electronic Vernier Caliper

● Technical Parameters

1. Made of stainless steel.
2. Resolution: 0.01mm/0.001.
3. Can set on zero at any location.

(2) Electronic Digital Display Micrometer

● Technical Parameters

1. Range: 0-25mm, 25-50mm, 50-75mm, 75-100mm
2. Resolution: 0.001mm
3. Power: Voltage 1.5V button battery
4. Working Temperature: 0~+40℃
5. Storage Temperature: -20~+70℃
6. Environment Humidity: ≤80%

6. RE528407 Injector Orifice Plate 04# Thickness Measurement Methods

(1) Electronic Vernier Caliper

▲ Notice: When using the electronic vernier caliper, be sure to return on zero port, otherwise there will be a large error in the measurement results!

(2) Electronic Digital Display Micrometer

7. RE528407 Injector Orifice Plate 04# Quality Control

(1) RE528407 Injector Orifice Plate 04# Testing

All RE528407 injector orifice plate 04# parts are subjected to A-hole flow test, Z-hole flow test, precision test, high temperature test, low temperature test, pressure test, leakage test, durability test, and various working condition tests.

(2) RE528407 Injector Orifice Plate 04# Inspection

The factory inspection of RE528407 injector orifice plate 04# is undergone three inspections - full inspection, random inspection, and batch inspection. Different brands of test benches are used to test RE528407 injector orifice plate 04# for a total of no less than three times for factory inspection, and RE528407 injector orifice plate 04# installation testing environment are progressed in dust-free workshop.

8. RE528407 Injector Orifice Plate 04# Warranty Instructions

(1) . RE528407 Injector Orifice Plate 04# Warranty Conditions and Instructions

▲ It is necessary to provide the pictures, videos of RE528407 injector orifice plate 04# when the injector orifice plate is abnormal during use or the test report of RE528407 injector orifice plate 04# inspection equipment as evidence to feedback to the salesman.

▲ Abnormal conditions are properly explained such as: 1. Black smoke, 2. Engine shake, 3. Difficulty starting the engine, 4. Engine noise, 5. Oil leakage etc.

▲ The above conditions may also be affected by incorrect installation of the fuel injector. If it is confirmed

that it is product problem after being tested by our company, the injector orifice plate is within the scope of warranty.

(2) . RE528407 Injector Orifice Plate 04# Warranty Coverage

▲ After customer receives the RE528407 injector orifice plate 04# within 15 days , customer can choose to replace it if there is a performance failure and the product has no appearance damage;

▲ If the RE528407 injector orifice plate 04# has performance problems during the warranty period (3 months), and it is confirmed to be product's problems after being tested, you can contact our salesmen to replace the same model or a reworked product with the same performance for free;

If the injector orifice plate is confirmed to be fault-free, it can only be repaired and it will be returned as original way.

(3) . RE528407 Injector Orifice Plate 04# Out of Warranty Coverage

▲ The RE528407 injector orifice plate 04# is artificially damaged due to assembly errors during the process of assembling.

▲ The warranty period has expired.

▲ RE528407 injector orifice plate 04# failure caused by high temperature, high pressure, humidity, rain and snow, saline-alkali land, earthquake, and used in abnormal environment.

▲ RE528407 injector orifice plate 04# damage caused by man-made reasons (throwing, strong magnetic field magnetization, set fire).

▲ RE528407 injector orifice plate 04# failure or injector damage caused by non-injector orifice plate's design, technology, manufacturing, quality and other issues.

▲ RE528407 injector orifice plate 04# failure due to system pressure exceeding system approved pressure.

▲ RE528407 injector orifice plate 04# failure caused by impurities (water, lead, aluminum powder, iron powder, sulfide) in the system fuel exceeding the standard requirements.

▲ RE528407 injector orifice plate 04# failure caused by not installing according to the tightening torque specified in the vehicle engine maintenance manual (the tightening torque is too large or too small).

▲ RE528407 injector orifice plate 04# failure caused by not following the installation angle specified in the vehicle engine maintenance manual.

▲ RE528407 injector orifice plate 04# failure caused by not following the cleaning requirements specified in the vehicle engine maintenance manual.

▲ RE528407 injector orifice plate 04# failure caused by failure to replace consumable parts as specified in the vehicle engine maintenance manual.

9. RE528407 Injector Orifice Plate 04# Installation Steps

For further information of orifice plate 04# installation steps, please check on "04# Orifice Plate for RE528407 Injector Technical Data" [2.4. RE528407 Injector Orifice Plate 04# Installation Steps](#)

10. RE528407 Injector Orifice Plate 04# Purchase Payment Methods

Payment methods: T/T, PayPal, Alipay, WeChat

11. RE528407 Injector Orifice Plate 04# Shipping Ways

Destination in China areas: SF Express, Debon Express, the corresponding logistics company can be provided according to customer requirements in special cases.

Destinations out of China's areas: DHL, UPS, FedEx, TNT air, ocean or other shipping methods required by customers.

12. RE528407 Injector Orifice Plate 04# Packing

Domestic express packaging:
Wrapped with Transparent tape



International express packaging:
Wrapped with yellow tape after wrapping with black protective film



Pallet Shipping: Use pallet that meet export requirements, and use white wrapping protective film to wrap and bind with cable ties